



SEDGWICK COUNTY
ELECTRIC COOPERATIVE

currentnews

SEDGWICK COUNTY ELECTRIC COOPERATIVE

BOARD OF DIRECTORS Clint DeVore

President

Cindy Foster

Vice President

Joe Baalman

Director

Joseph Gassmann

Director

Eugene Scheer

Director

Stephanie Seiler

Director

Alan J. Smarsh

Director

Rex Smith

Secretary/Treasurer

Stan Theis

Director

STAFF

Scott Ayres

General Manager/CEO

Lora Alloway

Office Manager

Kyle Pipkin

Line Superintendent

CONTACT INFORMATION

HEADQUARTERS

P.O. Box 220
1355 S. 383rd St. West
Cheney, KS 67025
316-542-3131
Fax: 316-542-3943

FROM THE MANAGER

Understanding Factors That Impact Your Energy Bills

February brings some of the coldest weather of the year, and as our home heating systems work harder and longer to keep us warm, we typically see higher energy bills.

There are a few key factors that affect electricity prices, as well as a few ways you can make a meaningful impact on home energy savings.

When you receive your monthly bill from Sedgwick County Electric Cooperative, you're provided with a summary of how much electricity you used during the billing cycle. On SmartHub you can even see how

electricity use may have spiked on days when you used more electricity, such as a particularly chilly day or when relatives were staying with you.

But you might be surprised to learn that beyond your monthly energy consumption, there are external factors that can impact the cost of electricity.



Scott Ayres

Continued on page 12B ▶

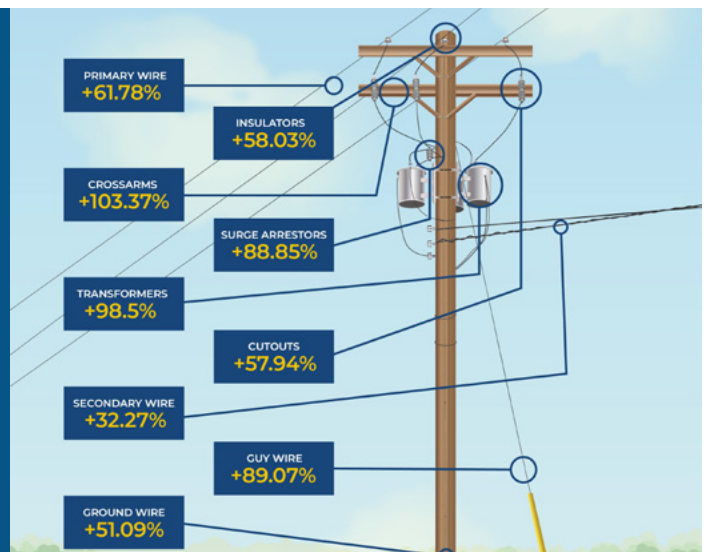
BREAKING DOWN THE RISING COSTS FOR AN ELECTRIC COOPERATIVE

Overhead Equipment Price Changes

January 2020 to May 2024

These percentages are a general representation modeled after a typical Electric Cooperative Distribution system.

Source: CEEUS



Understanding Factors That Impact Your Energy Bills

Continued from page 12A ▶

FUEL PRICES

Sedgwick County Electric Cooperative purchases electricity from our power generation partner, Kansas Electric Power Cooperative (KEPCo), at a wholesale cost, then we deliver that power to our local communities. The cost of generating and transmitting electricity from our generation partner accounts for a significant portion of the cost to provide electric service to homes and businesses — and the cost of fuels that are used to generate that electricity, such as nuclear and wind fluctuate based on supply and demand. While these fluctuations can impact the cost of electricity, we work closely with KEPCo to plan and help stabilize electricity prices for our members.

EXTREME WEATHER

While we can't control the weather, we can review weather patterns and forecasts to prepare for times of extreme cold or heat, when we know the demand for electricity will increase. But when temperatures become extremely cold and the demand for electricity spikes, the price of electricity can also increase.

INFRASTRUCTURE AND EQUIPMENT

To cover the costs associated with providing electricity to your home or business, Sedgwick County Electric Cooperative members pay a monthly consumer charge. This flat monthly fee ensures the cost of equipment, materials, labor and daily operations are covered for all members in Sedgwick County Electric Cooperative's service territory. To ensure the reliable service you expect and deserve, we must maintain the local grid, including power lines, substations and other essential equipment.

ENERGY POLICY AND REGULATIONS

Federal energy policies and regulations can have a profound impact on the cost of electricity. As energy generation shifts to the use of more renewable sources and stricter regulations for traditional, always-available fuel sources, such as natural gas and coal plants, costly upgrades and technologies must

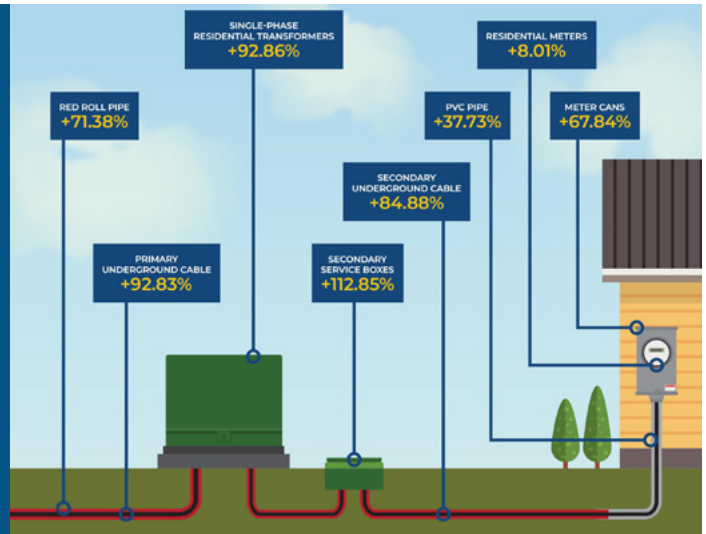
BREAKING DOWN THE RISING COSTS FOR AN ELECTRIC COOPERATIVE

Underground Equipment Price Changes

January 2020 to May 2024

These percentages are a general representation modeled after a typical Electric Cooperative Distribution system.

Source: CEEUS



be constructed and deployed. These additional costs are ultimately passed to consumers.

U.S. power consumption is expected to double by 2050. Across the country, electric cooperatives are working with members of Congress to advocate for smart energy policies that reliably power our local communities.

YOU HAVE CONTROL

While many of these external factors that impact the cost of electricity are out of our control, we all have the power to manage our energy use at home. The most effective way to lower use is thermostat management. Since heating and cooling account for a major portion of home energy use, adjusting the thermostat to the lowest comfortable setting in the winter and highest in the summer can help you save energy and money. Remember to service your heating and cooling system annually and replace dirty filters as needed.

You can also reduce energy costs by taking advantage of off-peak periods, when the demand for electricity is lower. Reserve energy-intensive chores for off-peak times, such as early in the morning or later in the evening, to save money. Sealing air leaks around windows, doors and other areas where gaps are possible, will help your heating and cooling system work less and improve the overall comfort of your home.

Sedgwick County Electric Cooperative is your local energy partner and we're here to help. As always, we will continue working diligently to provide you with reliable power at an affordable cost.

“While many of these external factors that impact the cost of electricity are out of our control, we all have the power to manage our energy use at home.”

Board of Directors Election Notification

Do you live in one of the following territories? Would you like to run for the Sedgwick County Electric Cooperative Board of Directors?

- ▶ **TERRITORY 7** – East of 407th St. W. (170th Ave.), West of 295th St. W., South of US 54.
- ▶ **TERRITORY 8** – East of 279th St. W., South of 109th St. N., West of 167th St. W., North of 29th St. N.
- ▶ **TERRITORY 9** – South of 109th St. N. (Irish Creek Road), West of 279th St. W., North of 29th St. N. (Smoots Creek Road).

To request a board of directors application, contact Executive Assistant Jo Luehrs at 316-542-3131 or jluehrs@sedgwickcountyelectric.coop. **DEADLINE TO SUBMIT AN APPLICATION IS FEB. 7, 2025.** Voting will take place at the annual membership meeting on April 8, 2025.

EFFICIENCY TIP

About 30% of your home's heating energy escapes through windows.

Use window coverings to minimize energy loss in cold weather and consider smart blinds that automatically adjust based on sunlight and temperature. This helps regulate indoor climate and keeps your heater from kicking on, saving energy.



SOURCE: WWW.SAFEELECTRICITY.ORG

Wrapped in Savings

Ensuring your home is properly insulated can improve energy efficiency and make your home more comfortable. Insulation acts like a cozy coat that reduces heat loss during winter months and a protective layer that reduces heat gain during summer months.

Many older homes have less insulation than newer homes, but even newer homes can benefit from additional insulation. While it's not the least expensive efficiency improvement, adding insulation and air sealing your home can provide the biggest bang for your buck in energy savings and overall comfort.

The most common areas to insulate are attics, ceilings, crawlspaces or unconditioned basements, exterior and interior walls, floors, and ductwork located in unconditioned spaces.

The amount and effectiveness rating of insulation required for each area varies by climate, but many websites like The Department of Energy or Home Depot provide easy-to-follow recommendations. Visit www.energy.gov/insulation to learn about recommended R-values for specific areas of the home based on climate zones.

It's important to understand how insulation effectiveness is measured. Insulation is rated in R-value, which measures the material's resistance to conductive heat flow. The higher the R-value, the greater the insulating effectiveness. The R-value you'll need depends on factors like climate, type of heating and cooling system and which area of the home you plan to insulate.

Insulation is offered in a wide range of materials from bulky fiberglass rolls to cellulose materials made from recycled paper products. If you're considering installing additional insulation, talk to an expert who can offer guidance on the right materials for your budget, climate and comfort needs.

Investing in proper insulation for your home not only enhances comfort but also reduces energy consumption.



A properly insulated home can reduce heat loss during the winter and reduce heat gain during the summer.



Join Us for
Sedgwick County Electric Co-op's
Annual Meeting
Tuesday, April 8, 2025

The Cotillion
11120 W. Kellogg, Wichita
Doors Open
6:15 p.m.
Dinner
6:30 p.m.

Meeting Schedule
Co-op Updates
Director Elections
Door Prizes
Youth Tour Winners
Announced
Employee Awards and
Introductions

Members in
attendance will
receive a
\$10 bill credit.

Special
\$100
Cash Drawing

Please bring the registration card
attached to the back of your annual
meeting notice you receive in the mail.

*Registration card is
needed for:*

*Cash
Drawing
Entry*

*Director
Elections*

Dinner
Catered by
Bite Me BBQ

Director Candidates
TERRITORY 7
Joe Baalman, Incumbent
TERRITORY 8
Stephanie Seiler, Incumbent
TERRITORY 9
Stan Theis, Incumbent