



SEDGWICK COUNTY
ELECTRIC COOPERATIVE

currentnews

SEDGWICK COUNTY ELECTRIC COOPERATIVE

BOARD OF DIRECTORS

Clint DeVore
President

Cindy Foster
Vice President

Margie Conyac
Secretary/Treasurer

Joe Baalman
Director

Donald Metzen
Director

Eugene Scheer
Director

Alan J. Smarsh
Director

Rex Smith
Director

Stan Theis
Director

STAFF

Scott Ayres
General Manager/CEO

Lora Alloway
Office Manager

Kyle Pipkin
Line Superintendent

CONTACT INFORMATION

HEADQUARTERS

P.O. Box 220
1355 S. 383rd St. West
Cheney, KS 67025
316-542-3131
Fax: 316-542-3943

FROM THE MANAGER

Clearing the Path to Reliability

Trees are majestic, beautiful, and good for the soul. And we know our members depend on us to deliver reliable power to their homes and businesses. That's why Sedgwick County Electric Cooperative strives to balance maintaining the beautiful surroundings we all cherish with ensuring reliable electricity. You might not realize it, but there are several benefits to regular tree trimming.

RELIABILITY

Keeping power lines clear of overgrown vegetation improves service reliability. After all, we've seen the whims of Mother Nature during severe weather events with fallen tree limbs taking down power lines and utility poles. While many factors can impact power disruptions, about half of all outages can be attributed to overgrown vegetation. This is why you sometimes see Sedgwick County Electric Cooperative crews or contractors out in the community trimming trees near power lines. Our trimming crews have been trained and certified based on the latest industry standards.

In fact, all U.S. electric utilities are required to trim trees that grow too close to power lines. Scheduled trimming throughout the year keeps lines clear from overgrown or dead limbs that are likely to fall, and we are better able to prepare for severe weather events.

Plus, it's more cost-effective to undertake preventative maintenance than it is to make repairs after the fact. Visual inspections of power lines and vegetation allow us to reduce labor and equipment costs while bolstering reliability.



Scott Ayres

SAFETY

Working near power lines can be dangerous, and we care about your safety and that of our lineworkers. For example, if trees are touching power lines in our members' yards, they can pose a grave danger to families. If children can reach those trees, they can potentially climb into a danger zone. Electricity can arc, or jump, from a power line to a nearby conductor such as a tree.

Any tree or branch that falls across a power line creates a potentially dangerous situation. A proactive approach lessens the chances of fallen trees during severe weather events that make it more complicated and dangerous for lineworkers to restore power.

AFFORDABILITY

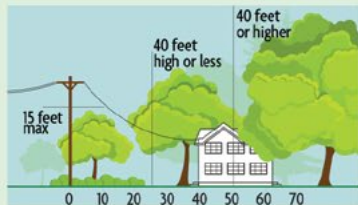
As a co-op, Sedgwick County Electric Cooperative always strives to keep

Continued on page 12B ▶

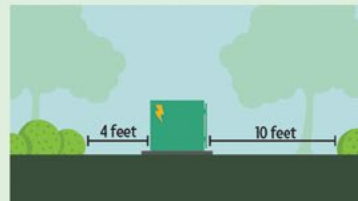
3 Ways to Help Limit Tree Trimming

Did you know electric utilities are required to trim trees and other types of vegetation that grow too close to power lines? We do everything we can to avoid trimming them, but **here's how you can help:**

1. Plant trees in the right place. Trees that will be less than 40 feet tall should be planted at least 25 feet away from power lines (greater than 40 feet tall should be planted at least 50 feet away).



2. Don't block pad-mounted transformers. Plant shrubs at least 10 feet away from transformer doors and 4 feet from transformer sides.



3. Report dangerous branches. If you spot a tree or branch that is dangerously close to power lines, let us know.



Trimming improves safety for all. Let's work together to enjoy the beauty of trees AND reliable electricity.

Clearing the Path to Reliability

Continued from page 12A ▶

costs down for our members. If trees and other vegetation are left unchecked, they can become overgrown and expensive to correct. A strategic vegetation management program helps keep costs down for everyone.

When it comes to vegetation management, there are ways you can help too. When planting new trees, make sure they're planted a safe distance from overhead power lines. Medium-height trees (40 feet or smaller) should be planted at least 25 feet from power lines. Taller trees (over 40 feet) should be planted at least 50 feet from power lines. You can also practice safe planting near pad-mounted transformers.

Plant shrubs at least 10 feet from the transformer door and 4 feet from the sides. If your neighborhood has underground lines, remember to contact 811 before you begin any project that requires digging.

Additionally, if you spot an overgrown tree or branch that's dangerously close to overhead lines, please let us know by contacting Sedgwick County Electric Cooperative office at 316-542-3131.

We have deep roots in our community, and we love our beautiful surroundings. It takes a balanced approach, and our vegetation management program is a crucial tool in ensuring service reliability.

Fellow Cooperatives Help Sedgwick County Electric Following January Storm

Sedgwick County Electric Cooperative saw its first storm of 2024 on Jan. 8. Linemen were dispatched on several outages due to this snowstorm. Sedgwick County Electric Cooperative's linemen had to contend with high winds, blowing snow and slick roadways throughout the night and following day.

As a result of scattered outages, Sedgwick County Electric Cooperative contacted Kansas Electric Cooperatives, Inc. (KEC), our statewide organization, to request mutual aid. KEC coordinates with participating cooperatives to find additional resources to help with power restoration.

Sedgwick County Electric Cooperative would like to thank Butler Electric Cooperative, Caney Valley Electric Cooperative, Heartland Rural Electric Cooperative and Twin Valley Electric Cooperative for sending line crews to help with restoration of our distribution lines. At one point we had over 2,000 members without electricity, but with help from these cooperatives, outages were restored within 48 hours.

ENERGY EFFICIENCY Tip of the Month

Lengthen the life of your clothes dryer with regular cleaning. Clean the lint filter after every load, which improves air circulation and safety. Check the lint trap opening to ensure it's clean. Use a vacuum to remove any lint that's fallen inside the opening. If you use dryer sheets, check the lint filter for residue buildup. Remove any residue with hot water and a nylon brush or toothbrush. Over time, dryer sheets can leave a film on the filter, which can affect the performance of the motor.

SOURCE: ENERGY.GOV



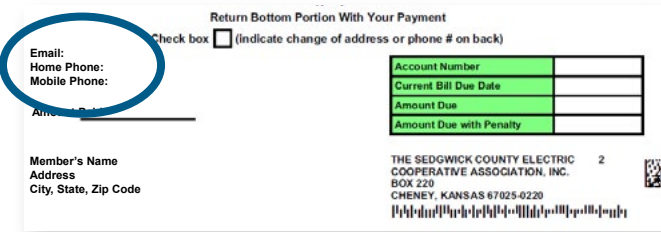
Help Us Restore Power Outages With Updated Contact Information

Sedgwick County Electric Cooperative works with Cooperative Response Center, Inc. (CRC) for all our after-hours outage reporting.

- ▶ CRC verifies individual outages left on their automated system by returning member calls on a toll-free number. This permits CRC to prioritize outages to ensure power is restored in a safe and timely manner.
- ▶ CRC also asks members if they have checked main fuse/breakers, if their meter has a display and relay any information regarding fees if outage is on the member's side.

For CRC to locate your service and call members back as quickly as possible, we need to have updated contact information. Please check the bottom of your bill for the contact numbers and the email address we have on file. If this information needs to be updated, please do so, using one of the following ways:

- ▶ Cross out the outdated information at the bottom of the bill and replace it with updated information. Send the stub back with your payment and we will make the correction.
- ▶ Call the office at 316-542-3131 or toll-free at 866-542-4732 during regular business hours (8 a.m.-5 p.m., Monday-Friday, except major holidays).
- ▶ Visit our website at www.sedgwickcountyelectric.coop, locate green box labeled "Online Bill Pay with SmartHub" log in or set up an account. Then follow these steps:



Cross out and update the contact information at the bottom of your the bill then return with your payment. Sedgwick County Electric Cooperative will then update your information.

UPDATE PHONE NUMBERS

- ▶ Click Settings
- ▶ Click on Contact Information
- ▶ Update Contact Information
- ▶ Click Save

UPDATE EMAIL INFORMATION

- ▶ Click Settings
- ▶ Click on Contact Methods
- ▶ Click on Add Email
- ▶ Click Save

Sedgwick County Electric Cooperative's Board of Directors and employees are committed to providing safe, reliable and innovative energy solutions for you, our member-owners. Please help us by updating your contact information now and in the future as changes occur.

Need to Report an Outage?

316-542-3131



BOARD OF DIRECTORS ELECTION NOTIFICATION



Board territories, map and descriptions are located at www.sedgwickcountyelectric.coop. Territories and directors up for reelection are:

- ▶ **TERRITORY 4** – West of 167th St. W., East of 295th St. W, South of US-54 — **DONALD METZEN.**
- ▶ **TERRITORY 5** – West of 407th St. W (170th Ave.), West side of Cheney Lake — **CLINT DEVORE.**
- ▶ **TERRITORY 6** – East of 407th St. W (170th Ave.), South of 29th St. N (Smoots Creek Road), West of 167th St. W, North of US-54 — **EUGENE SCHEER.**

Voting will take place at the annual membership meeting on April 9, 2024.



Remember to turn your clocks forward one hour.



JOIN US

SEDGWICK COUNTY ELECTRIC CO-OP

Annual Meeting

The Annual Membership Meeting of Sedgwick County Electric Co-op will be held on Tuesday, April 9, 2024, at The Cotillion, 11120 W. Kellogg in Wichita.

For quick registration and to enter to win **CASH**, bring your registration card located on the back cover of the April issue of *Kansas Country Living* magazine.



Doors open 6:15 p.m.
Dinner served 6:30 p.m.



Door prizes.
Receive a \$10 bill credit.

Enter for a chance to win \$100 CASH bring your registration card (located on the back cover of April's *Kansas Country Living* magazine).



Co-op updates.
Director elections.
Youth Tour winners announced.
Employee introductions and service awards.

APRIL 2024						
S	M	T	W	Th	F	S
	1	2	3	4	5	6
7	8	9	10	11	12	13
14	15	16	17	18	19	20
21	22	23	24	25	26	27
28	29	30				