



SEDGWICK COUNTY
ELECTRIC COOPERATIVE

currentnews

SEDGWICK COUNTY ELECTRIC COOPERATIVE

BOARD OF DIRECTORS

Clint DeVore
President

Cindy Foster
Vice President

Rex Smith
Secretary/Treasurer

Joe Baalmann
Director

Joe Gassmann
Director

Eugene Scheer
Director

Stephanie Seiler
Director

Alan J. Smarsh
Director

Stan Theis
Director

STAFF
Scott Ayres
General Manager/CEO

Lora Alloway
Office Manager

Kyle Pipkin
Line Superintendent

CONTACT INFORMATION

HEADQUARTERS

P.O. Box 220
1355 S. 383rd St. West
Cheney, KS 67025
316-542-3131
Fax: 316-542-3943

FROM THE MANAGER

Be Ready for Storm Season

Preparedness is the best defense



Scott Ayres

Spring is on our doorstep and like many of you, I'm looking forward to more opportunities to be outdoors and enjoy warmer weather. Springtime brings

many of my favorite activities like cooking out with family and friends, time spent working in the garden and simply slowing down a bit to enjoy life.

Unfortunately, spring and summer can also create the perfect conditions for severe storms.

Sedgwick County Electric Cooperative crews are always prepared and standing by to respond should power outages occur in our area. When severe storms cause power disruptions, our line crews take all necessary precautions before they get to work on any downed lines.

I encourage you to also practice safety and preparedness to protect your family during storms and outages.

The Federal Emergency Management Agency recommends the items below as a starting point for storm and

disaster preparedness, but you can visit www.ready.gov for additional resources.

- ▶ Stock your pantry with a three-day supply of non-perishable food, including canned goods, energy bars, peanut butter, powdered milk, instant coffee, water, and other essentials (i.e., diapers and toiletries).
- ▶ Confirm that you have adequate sanitation and hygiene supplies including towelettes, soap, and hand sanitizer.
- ▶ Ensure your first-aid kit is stocked with pain relievers, bandages and other medical essentials. Make sure your prescriptions are current.
- ▶ Set aside basic household items you will need, including flashlights, batteries, a manual can opener and portable, battery-powered radio or TV.
- ▶ Organize emergency supplies so they are easily accessible in one location.

In the event of a prolonged power outage, turn off major appliances, TVs, computers and other sensitive electronics. This will help avert damage from potential power surges and will also help prevent overloading circuits during power restoration. That said, do leave one light on so you will know when power is restored.

Continued on page 12B ▶

TORNADO SAFETY & Electrical Hazards

BEFORE THE TORNADO:

- ▶ Prepare an emergency kit and keep your devices charged.
- ▶ Know your utility company's contact information.

DURING THE TORNADO:

- ▶ Take shelter in a basement or windowless room.
- ▶ Unplug appliances to avoid power surges and leave one light on to signal power return.
- ▶ Avoid power lines if outside or driving; seek shelter immediately.

AFTER THE TORNADO:

- ▶ Avoid basements and other flooded areas that are in or near electrical outlets or appliances.
- ▶ Do not use water-damaged electrical items until a qualified electrician has inspected them and ensured they are safe.
- ▶ Stay at least 50 feet away from downed power lines and any debris they touch.
- ▶ Call 911 for electrical injuries; don't touch victims of electrical contact.

GENERATOR SAFETY:

- ▶ Use outdoors, 20-plus feet from the home and away from windows and doors.
- ▶ Keep the generator dry by placing it under a canopy.
- ▶ Never plug it directly into wall outlets. This could energize power lines and injure yourself, neighbors or utility workers.

Be Ready for Storm Season *Continued from page 12A* ▶

If you plan to use a portable generator, make sure it's rated to handle the amount of power you will need and always review the manufacturer's instructions to operate it safely.

Listen to local news or an NOAA weather radio for storm and emergency information.

Severe storms can occasionally bring down power lines. If you see a downed line, always assume it's energized and never approach it. If flooding occurs, never walk through areas where power lines could be submerged.

Planning for severe storms or other emergencies can reduce stress and anxiety caused by the weather

event and lessen the impact of the storm's effects.

Sign up for NOAA emergency alerts and warnings and follow us on Facebook for the latest power restoration updates. If you experience an outage, please don't report it on Facebook. Call our outage reporting number at 316-542-3131 — this is the fastest way to let us know your power is out.

I hope we don't experience severe storms over the spring and summer months, but we can never predict Mother Nature's plans. At Sedgwick County Electric Cooperative, we recommend that you make a plan today — because storm preparedness is always our best defense.

Tips to Go Green for St. Patrick's Day

1 REPLACE YOUR HVAC FILTER.

When was the last time you replaced your filter? If you can't remember, there's a good chance it is time to replace it. Generally, these need to be replaced every three months, but factors such as having pets, climate and age of your system can cause this to vary.

2 INSTALL A SMART THERMOSTAT.

A smart thermostat can add convenience, generate savings and help you go greener. You can set it to adjust your home's temperature depending on your schedule, and many thermostats can detect when no one is home and automatically reduce use.

3 ANALYZE YOUR ENERGY BILL.

Review past bills to better understand your energy consumption patterns. Understanding these patterns can help you decide when to run appliances, whether to pursue energy efficiency upgrades and how to start reducing your usage.

4 CUT ENERGY USE DURING PEAK HOURS.

In the springtime and summer the peak hours for electricity tend to be from 3-7 p.m. Consider spending time outside during this time

and waiting to do inside chores such as laundry until later in the evening.

5 UPGRADE TO ENERGY-EFFICIENT APPLIANCES.

Look for appliances that are Energy Star-certified. These appliances use 10% to 15% less energy and water than standard models, according to www.energy.gov.

6 LOOK FOR ENERGY SAVINGS REBATE PROGRAMS ON ELECTRIC VEHICLES.

This could be your year to go electric! Many government programs offer rebates and incentives to help make electric technologies more accessible.

7 CONSIDER GOING GEOTHERMAL FOR YOUR HEATING AND COOLING NEEDS.

Geothermal systems are literally powered by the Earth. These systems heat and cool your home using a piping system, referred to as a loop. Water circulates in this loop to exchange heat between your home, the ground source heat pump and the earth. There can be significant start-up costs, so see what incentives are offered in your area. There are also collective buying programs to help reduce initial costs through competitive bulk pricing.



SOURCE: WWW.SAFEELECTRICITY.ORG

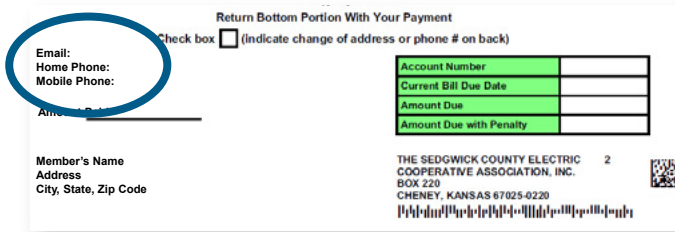
Help Us Restore Power Outages With Updated Contact Information

Sedgwick County Electric Cooperative works with Cooperative Response Center, Inc. (CRC) for our after-hours outage reporting.

- ▶ CRC verifies individual outages left on their automated system, by returning a phone call from one of their toll-free numbers. This permits CRC to prioritize outages to ensure power is restored in a safe and timely manner.
- ▶ CRC also asks members if they have checked main fuse/breakers, if their meter has a display. They also relay any information regarding fees if the outage is on the member's side.

For CRC to locate your service and call members back as quickly as possible, we need to have updated contact information. Please check the bottom of your bill for the contact numbers and the email address we have on file. If this information needs to be updated, please do so, using one of the following ways:

- ▶ Cross out the outdated information at the bottom of the bill and replace it with updated information. Send the stub back with your payment and we will make the correction.
- ▶ Call the office at 316-542-3131 or our toll-free number 866-542-4732 during regular business hours (8 a.m.-5 p.m., Monday through Friday, except major holidays).
- ▶ Visit www.sedgwickcountyelectric.coop and locate the green box labeled "Online Bill Pay with SmartHub" log in or set up an account. Then follow these steps:



Cross out and update the contact information at the bottom of your the bill then return with your payment. Sedgwick County Electric Cooperative will then update your information.

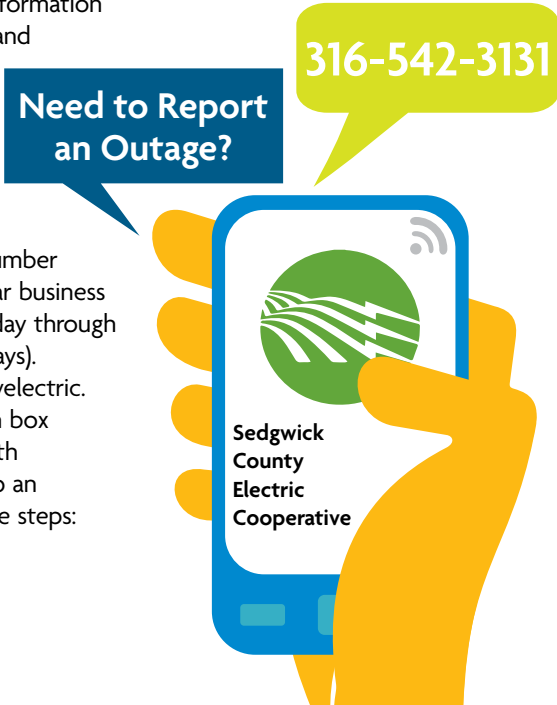
UPDATE PHONE NUMBERS

- ▶ Click Settings
- ▶ Click on Contact Information
- ▶ Update Contact Information
- ▶ Click Save

UPDATE EMAIL INFORMATION

- ▶ Click Settings
- ▶ Click on Contact Methods
- ▶ Click on Add Email
- ▶ Click Save

Sedgwick County Electric Cooperative's Board of Directors and employees are committed to providing safe, reliable, innovative energy solutions for you, our member-owners. Please help us by updating your contact information now and in the future as changes occur.



BOARD OF DIRECTORS ELECTION NOTIFICATION

The following individuals are candidates for Sedgwick County Electric Cooperative Board of Directors. Voting will take place at the annual membership meeting on **APRIL 8, 2025**.

- ▶ **TERRITORY 7** – East of 407th St. W. (170th Ave.), West of 295th St. W., South of US 54.
 - ▶ **JOE BAALMANN**, Incumbent
- ▶ **TERRITORY 8** – East of 279th St. W., South of 109th St. N., West of 167th St. W., North of 29th St. N.
 - ▶ **STEPHANIE SEILER**, Incumbent
 - ▶ **VIRGIL J. ALBERT**, Colwich, Kansas
- ▶ **TERRITORY 9** – South of 109th St. N. (Irish Creek Road), West of 279th St. W., North of 29th St. N. (Smoots Creek Road).
 - ▶ **STAN THEIS**, Incumbent

TIPS TO AVOID ENERGY SCAMS

Be cautious of fraudulent websites pretending to be an electric utility. Scammers often create look-alike sites to steal your personal or payment information. Always type your utility's official web address directly into your browser instead of clicking email or text links. Watch for signs of a secure website, such as "https://" in the address bar. If you're ever unsure, call your utility company using the official phone number listed on your bill to verify payment or account details.

SOURCE: NRECA

Join Us for
Sedgwick County Electric Co-op's
Annual Meeting
Tuesday, April 8, 2025

The Cotillion
11120 W. Kellogg, Wichita
Doors Open
6:15 p.m.
Dinner
6:30 p.m.

Meeting Schedule
Co-op Updates
Director Elections
Door Prizes
Youth Tour Winners
Announced
Employee Awards and
Introductions

Members in
attendance will
receive a
\$10 bill credit.

Special
\$100
Cash Drawing

Please bring the registration card
attached to the back of your annual
meeting notice you receive in the mail.

*Registration card is
needed for:*

*Cash
Drawing
Entry*

*Director
Elections*

Dinner
Catered by
Bite Me BBQ

Director Candidates

TERRITORY 7

Joe Baalman, Incumbent

TERRITORY 8

Stephanie Seiler, Incumbent
Virgil J. Albert, Colwich, Kansas

TERRITORY 9

Stan Theis, Incumbent