

P.O. Box 220, Cheney, KS 67025
316-542-3131 or 866-542-4732
www.sedgwickcountyelectric.coop



Sedgwick County Electric Cooperative

**SEDGWICK COUNTY
ELECTRIC COOPERATIVE**

currentnews

Sedgwick County Electric Cooperative

Board of Directors

Clint DeVore

President

Cindy Foster

Vice President

Margie Conyac

Secretary/Treasurer

Joe Baalman

Director

Donald Metzen

Director

Eugene Scheer

Director

Alan J. Smarsh

Director

Rex Smith

Director

Stan Theis

Director

Staff

Scott Ayres

General Manager/CEO

Marcia Kampling

Office Manager

Kyle Pipkin

Line Superintendent

Contact Information

Headquarters

P.O. Box 220

1355 S. 383rd St. West

Cheney, KS 67025

316-542-3131

Fax: 316-542-3943

FROM THE MANAGER

Co-op Looks to Renewable Energy

Sedgwick County Electric Cooperative is looking to solar for future cost savings measures, increased reliability and a reduced carbon footprint through a unique partnership to construct two 1-megawatt solar farms located near the cooperative's substations.

This opportunity began when the wholesale power contract between participating cooperatives and the future-focused generation and transmission electric cooperative Kansas Electric Power Cooperatives, was recently modified to provide Kansas electric co-ops the ability to self-procure up to 15% of peak demand, with 5% of that amount specifically allowing for the addition of solar.

We are taking advantage of this unique opportunity while practicing with the sixth cooperative principle – cooperation among cooperatives. We will be working with 12 cooperatives across the state, as well as Today's Power, Inc. (TPI), to get the best price for purchased power we can. This project is unique because it requires very little

investment upfront. TPI will be installing and operating the solar farms and contract with Sedgwick County Electric Cooperative to sell the power produced by each solar farm as a Purchased Power Agreement (PPA). The PPA is slated for an initial 25 years followed by additional five-year options.

Incorporating solar is another way our member-owners can benefit by reducing electrical usage during our peak demand months. A major portion of our annual wholesale power bill is based on power consumed during June through September when temperatures are above 95 degrees.

TPI is a for-profit subsidiary of Arkansas Electric Cooperatives, Inc. (AECI) with a rich history working with cooperatives. They also are experts in renewable energy. This solar project is a special opportunity, and we are looking forward to working with TPI.



Scott Ayres



The Sedgwick County Board of Directors, Manager Scott Ayres, Line Superintendent Kyle Pipkin, Office Manager Marcia Kampling and Jen-nah Denney with Today's Power, Inc. helped with a solar farm groundbreaking at the Maize Substation. The site will be one of 20 solar farms built across Kansas as a part of the Kansas Sun Power Project that brings Kansas electric co-ops together in partnership with TPI.

Nominating Committee Volunteers Needed

The Sedgwick County Electric Cooperative's Board of Directors are seeking volunteers for the nominating committee.

The committee's purpose is to select nominees for three positions of the cooperative's Board of Directors. The election of directors will be held at the annual meeting in April 2021.

The committee will meet one evening in February at the cooperative's office in Cheney.

The board has historically requested that the nominating committee put forth at least two names for each seat. The committee members are responsible for contacting possible candidates.

If you would like to be considered for the committee or want information please contact Executive Assistant Jacque Matchett at 316-542-3131 or www.jmatchett@sedgwickcountyelectric.coop

To Mask or Not to Mask: That is (Not) the Question

Most people do not enjoy wearing masks. They are inconvenient and put the kibosh on social interaction. They can give us the sudden urge to take a deep breath and they can make it difficult for others to hear us, just to name some of the downsides.

However, the Centers for Disease Control and Prevention (CDC) changed its stance on mask recommendations from when COVID-19 first hit in the U.S. CDC experts first advocated not wearing masks but later changed that recommendation based on new research and data. Since recommending mask usage, the CDC came up with these specific guidelines for wearing them:

- ▶ Wear masks that have two or more layers to help stop the spread of COVID-19.
- ▶ Masks are recommended for people 2 years old and up.
- ▶ They should not be worn by children younger than age 2, people who have trouble breathing, or people who cannot remove it without help.
- ▶ People should not wear masks intended for healthcare workers, for example, N95 respirators.
- ▶ Although it might be better than nothing, the CDC does not currently recommend using gaiters or face shields. A gaiter is like a thick headband you wear around your neck that you can pull up and over your mouth and nose.

How to Select a Mask

Although mostly common knowledge these days, here are some reminders about selecting types of masks. According to the CDC, choose masks that:

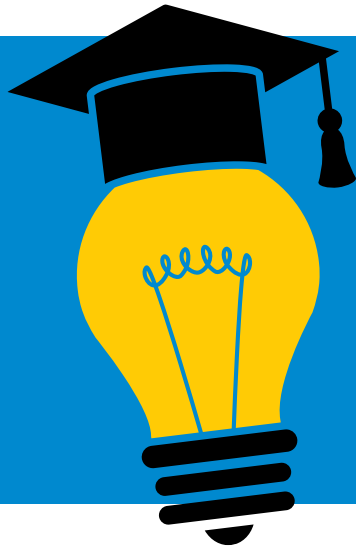
- ▶ Have two or more layers of washable, breathable fabric.
- ▶ Completely cover your nose and mouth.
- ▶ Fit snugly against the sides of your face and don't have gaps.

And, although tempting, a mask cannot do its job if it is worn around your neck, under your nose, on your chin, dangling from one ear, or left in your car.

Working on the LINE



Sedgwick County Electric Cooperative's linemen complete work replacing vacuum interrupters at the Maize Substation.



SEDGWICK COUNTY ELECTRIC OFFERS TWO \$1,500 SCHOLARSHIPS IN LIEU OF 2021 YOUTH TRIPS

During the KEC Board Meeting on Dec. 3, 2020, the KEC Board of Trustees voted to cancel all out-of-state youth programs for 2021. Therefore, the 2021 Youth Tour to Washington, D.C., and the 2021 Cooperative Youth Leadership Camp in Colorado have been canceled.

ATTENTION HIGH SCHOOL SOPHOMORES & JUNIORS

Please submit the application below to Sedgwick County Electric Co-op, P.O. Box 220, Cheney, KS 67025 or scan and email to jmatchett@sedgwickcountyelectric.coop by **FEB. 5, 2021**. Please complete both sections on page 16C and 16D.

Name of Applicant: _____

Address: _____ City: _____ State/Zip: _____

2020-2021 Grade: _____ School: _____

Gender: M or F Home Phone: _____ Cell Phone: _____

Student's Email: _____

I AGREE THAT ALL INFORMATION SUPPLIED IN THIS APPLICATION IS ACCURATE AND TRUE.

Applicant Signature: _____

I HEREBY GRANT PERMISSION TO THE ABOVE APPLICANT TO COMPETE IN THE YOUTH SCHOLARSHIP COMPETITION.

Parents Name: _____

Signature of Parent or Guardian: _____

List activities you have participated in at your school and any special honors you have received, such as class officer, plays, music, activities, etc.

Activities	Years	Remarks & Honors

Continued on page 16D ►

Continued from page 16C ▶

List extracurricular activities you have participated in, such as FFA, 4-H, church, community, etc.

Activities

Years

Remarks & Honors

List any hobbies, talents, special interests, etc.

What are your future plans?

Anything else you'd like to tell us about yourself?

If you had the opportunity to change one thing about your school or community, what would it be and why? How would you go about making the change?
