



Sedgwick County Electric Cooperative

SEDGWICK COUNTY ELECTRIC COOPERATIVE

currentnews

Sedgwick County Electric Cooperative

Board of Directors

Clint DeVore

President

Cindy Foster

Vice President

Margie Conyac

Secretary/Treasurer

Joe Baalman

Director

Donald Metzen

Director

Eugene Scheer

Director

Alan J. Smarsh

Director

Rex Smith

Director

Stan Theis

Director

Staff

Scott Ayres

General Manager/CEO

Marcia Kampling

Office Manager

Kyle Pipkin

Line Superintendent

Contact Information

Headquarters

P.O. Box 220

1355 S. 383rd St. West

Cheney, KS 67025

316-542-3131

Fax: 316-542-3943

FROM THE MANAGER

Capital Credit Q&A



Scott Ayres

Sedgwick County Electric Cooperative's purpose is to provide safe, reliable, innovative energy solutions for you, our member-owners.

evaluates the financial conditions, operating expenses and revenue of the cooperative and determines if any capital credits can be retired and the amount of the retirements. This year the board of directors approved just over \$307,000 for the 2020 general retirement. The 2020 retirement consists of the remaining 2002 patronage and 25% of the 2003 patronage. Capital credits will again be credited to the members' March bill.

What are capital credits?

Sedgwick County Electric Co-op is a not-for-profit cooperative. All operating margins are allocated back to our member-owners as capital credits. Each year the board of directors

How are margins allocated?

Margins are allocated to member-owners as capital credits based on how much

Continued on page 16C ▶

Mark Your Calendars for Annual Meeting

Bring your registration card attached to the Annual Meeting Notice for a chance to win \$100!

The 2020 Sedgwick County Electric Cooperative annual meeting will be held **TUESDAY, APRIL 7** at The Cotillion Hall and Ballroom, 11120 W. Kellogg, in Wichita. Doors will open at 6:15 p.m. and dinner will be served at 6:30 p.m. We hope to see you there!

Board territories, map and descriptions located at www.sedgwickcountyelectric.coop. Territories and directors up for re-election are: Territory 1, North of 109th St. N. (Irish Creek Road) — **CINDY FOSTER**; Territory 2, South of 109th St. N., North of US 54, East of 167th St. W. — **ALAN SMARSH**; and Territory 3, East of 167th St. W., South of US 54 — **REX SMITH**.

Member-owners attending the annual membership meeting will receive updates regarding the following:

- ▶ Cooperative Updates
- ▶ Youth Tour, Camp and Scholarships Awards
- ▶ Employee Recognition
- ▶ Door Prizes

April 2020						
S	M	T	W	U	F	S
			1	2	3	4
5	6	7	8	9	10	11
12	13	14	15	16	17	18
19	20	21	22	23	24	25
26	27	28	29	30		



Right On: What is Right-of-Way?

Easements or rights-of-way are agreements between utilities and property owners to allow a utility to use or access a piece of property according to the terms of the agreement.

Easements are areas designated for overhead and underground utility access, and are usually defined when a lot or neighborhood is first platted. Easements are implemented because it is more efficient and less expensive to run utility lines straight through neighborhoods than it is

to run them around parcels of land.

Having right-of-way means utilities can access the area to fix a utility-related problem or to perform maintenance.

Easements outline general property rights by others while right-of-way (as its name implies) is a specific property right.

Workers who service utility lines will arrive in a marked vehicle and have proper identification. If you have any concerns when these crews arrive, please call us at 316-542-3131.

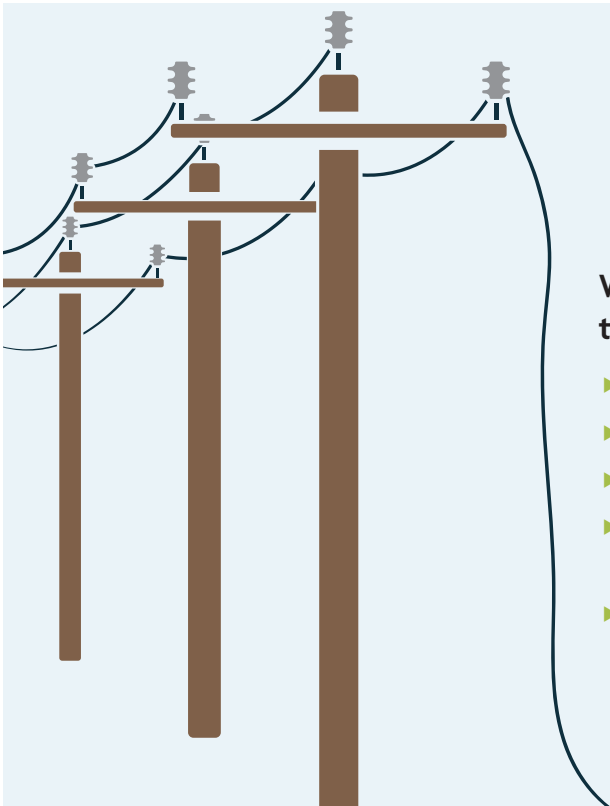
A Downed Line Always Means Danger

If you see a downed power line after a bad storm or at an accident scene, NEVER get out to help or go near the downed line. Always assume a downed power line is energized and deadly. This also applies to any electrical equipment, including pad-mounted transformers (green boxes), other utility cabinets or fenced substations.

If you are involved in an accident with a downed line or other utility equipment — whether in a car, tractor, or any other type of vehicle or equipment — do not get out. If you exit

the vehicle and walk away, you could be electrocuted. Instead, call 911 and wait for the utility to arrive to cut the power.

If you must leave a vehicle due to smoke or fire, make a solid jump out with your feet together and without touching the car or truck, and then hop with both feet at the same time — DO NOT WALK — at least 50 feet from the vehicle. Hopping helps prevent two different voltages of electricity from entering your body at the same time, which can cause shock and electrocution.



KNOW WHAT TO DO WHEN YOU SEE A DOWNED POWER LINE

When power lines go down, take these precautions to stay safe:

- ▶ Call 911 to report fallen or downed power lines.
- ▶ Know that power lines do not have to be arcing or sparking to be live.
- ▶ Stay at least 10 feet away from the line.
- ▶ If the line is down because a vehicle has struck it, remain in the vehicle until emergency crews say it is safe to exit.
- ▶ If there is a fire or you smell gasoline, hop out without touching the vehicle—DO NOT WALK, but hop to safety at least 50 feet away.

Always treat a downed power line as live and never touch any wire that is down.

Hill Promoted to Journeyman Lineman



Tommy Hill

On Jan. 1, **TOMMY HILL** accepted the journeyman lineman position. Hill began his career with Sedgwick County Electric Cooperative in June 2014 for the summer internship position. After attending Pratt Community College's Electrical Power Technology program Hill was hired as an equipment operator in December 2015. Hill continued to gain cooperative experience and moved his way up through the cooperative's apprentice program. With hard work and dedication, Hill completed the necessary hours to advance to journeyman lineman. Sedgwick County Electric Cooperative thanks Tommy for his dedicated service.

Directors Receive Director Gold Certificate

Sedgwick County Electric Cooperative board of directors **MARGIE CONYAC, CINDY FOSTER, DON METZEN, GENE SCHEER, ALAN SMARSH** and **REX SMITH** receive their Director Gold certification.

To maintain their Director Gold Certificate,

directors must earn three credits from the approved list of continuing education programs within a two-year period. A maximum of one credit can be earned by attending a conference or non-NRECA program with the remaining two credits earned by taking NRECA's BLC courses.

Director certificate programs are specifically designed to help electric cooperative directors, at every stage of their service, understand their roles and responsibilities, stay up-to-date on the



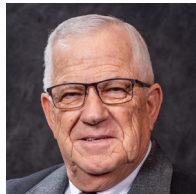
Margie Conyac



Cindy Foster



Don Metzen



Gene Scheer



Alan Smarsh



Rex Smith

key issues and trends in the industry and prepare them to meet the challenges facing electric co-ops now and in the future. NRECA offers director education courses throughout the year in conjunction with a variety of NRECA educational conferences and events across the country, in partnership with statewide associations and on-site at individual co-ops.

Help us congratulate Cindy, Don, Margie, Rex, Alan and Gene on this achievement and their continued service.

Nominating Committee Meeting

On Feb. 13, 2020, Sedgwick County Electric Cooperative held a nominating committee meeting. The following committee members were present: Randy O'Neal, Fred Foley, Fred Homertzheim, Robert Potter, Teresa Robben, Beverly Rausch, Gloria Puetz, Jerold Petersen, Greg Kalkwarf, Luke Scott, and Jim Scheer. General Manager/CEO Scott Ayres and Executive Assistant Jacque Matchett were also in attendance.

Ayres called the meeting to order, briefly explained the purpose of the nominating committee and read the "quali-

fications" section of the cooperative bylaws. The following candidates were nominated by the nominating committee or by petition for placement on the 2020 election ballot.

► Territory 1, North of 109th St. N. (Irish Creek Road) **CINDY FOSTER**

► Territory 2, South of 109th St. N., North of US 54, East of 167th St. W.

ALAN SMARSH

► Territory 3, East of 167th St. W., South of US 54 **REX SMITH**

Director elections will be held at the annual membership meeting on Tuesday April 7, 2020.

Capital Credit Q&A

Continued from page 16A ►

electricity the member used and how much the member paid for it throughout the year.

Do I lose my capital credits in the years Sedgwick County Electric Co-op does not retire capital credits?

No. For every year a member-owner receives electric utilities from the co-op an allocation is made to their account and is retained until the board of directors approves retirement.

Do I have to report capital credits on my tax returns?

Capital credits are money returned for the purchase of electricity in a previous year. Member-owners should discuss capital credits taxable retirements with their tax advisers.

What if I have moved?

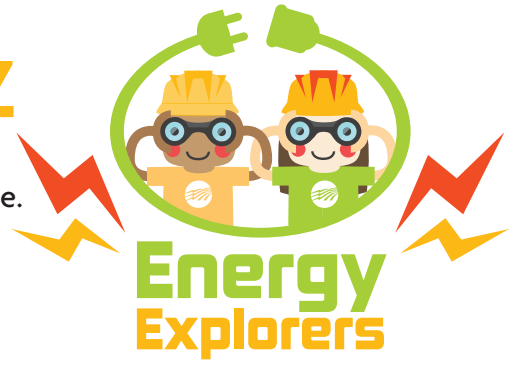
If you have moved or no longer have electric service with Sedgwick County Electric Co-op, it is important that you inform the cooperative of your current address, so any future retirements can be properly mailed to you. If you purchased electricity during the years being retired, then you are entitled to a capital credits retirement, even if you have moved out of the Sedgwick County Electric Co-op service area.

SPRING EFFICIENCY QUIZ

Spring is just around the corner!

Take this quiz to learn how you can help save energy around your home.

Hint: Check your work in the answer key below.



1. Sealing air leaks around _____ saves energy and keeps your home comfortable.

A) doors B) windows C) both A and B

2. Unplug devices and electronics that consume energy even when they're not in use, like _____.

A) refrigerators B) cell phone chargers C) dishwashers

3. Ceiling fans cool people, not rooms, so turn them off when you leave the room to save energy.

A) True B) False

4. LED bulbs typically use _____ less energy than incandescent light bulbs.

A) 25% B) 50% C) 75%

5. Planting _____ around your home can block unwanted heat from the sun.

A) flowers B) shade trees C) vegetables



Answer Key: 1. C 2. B 3. A 4. C 5. B